

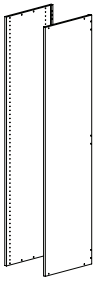
ORGANIZERS DIRECT

2010 PRICE BOOK



GARAGE

TOTAL GARAGE

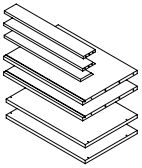


UPRIGHTS

Contains equal quantities of left and right panels

Height	Depth	Thickness	Units/Case	Slate	Secret	Coco	Unit Price
30"	12"	3/4"	2	4100.312.11	4100.312.01	4100.312.08	\$100.00
	16"			4100.316.11	4100.316.01	4100.316.08	\$110.00
	20"			4100.320.11	4100.320.01	4100.320.08	\$125.00
	24"			4100.324.11	4100.324.01	4100.324.08	\$150.00
42"	16"			4101.316.11	4101.316.01	4101.316.08	\$120.00
	20"			4101.320.11	4101.320.01	4101.320.08	\$140.00
	24"			4101.324.11	4101.324.01	4101.324.08	\$170.00
78"	16"			4102.316.11	4102.316.01	4102.316.08	\$190.00
	20"			4102.320.11	4102.320.01	4102.320.08	\$215.00
	24"			4102.324.11	4102.324.01	4102.324.08	\$250.00
90"	16"			4103.316.11	4103.316.01	4103.316.08	\$210.00
	20"			4103.320.11	4103.320.01	4103.320.08	\$230.00
	24"	4103.324.11	4103.324.01	4103.324.08	\$270.00		

Height	Depth	Thickness	Units/Case	White	Unit Price
30"	12"	3/4"	2	4100.312.00	\$80.00
	16"			4100.316.00	\$90.00
	20"			4100.320.00	\$105.00
	24"			4100.324.00	\$125.00
42"	16"			4101.316.00	\$100.00
	20"			4101.320.00	\$115.00
	24"			4101.324.00	\$140.00
78"	16"			4102.316.00	\$150.00
	20"			4102.320.00	\$170.00
	24"			4102.324.00	\$200.00
90"	16"			4103.316.00	\$165.00
	20"			4103.320.00	\$185.00
	24"	4103.324.00	\$215.00		

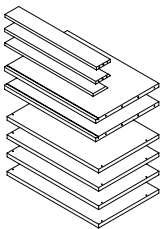


BASE/UPPER CABINET SHELF KITS

Contains 2 fixed, 2 adjustable, cleats and hardware.

Width	Depth	Thickness	Units/Case	Slate	Secret	Coco	Unit Price
18"	12"	1"	1	4200.312.11	4200.312.01	4200.312.08	\$130.00
	16"			4200.316.11	4200.316.01	4200.316.08	\$150.00
	20"			4200.320.11	4200.320.01	4200.320.08	\$175.00
	24"			4200.324.11	4200.324.01	4200.324.08	\$195.00
24"	12"			4201.312.11	4201.312.01	4201.312.08	\$170.00
	16"			4201.316.11	4201.316.01	4201.316.08	\$190.00
	20"			4201.320.11	4201.320.01	4201.320.08	\$215.00
	24"			4201.324.11	4201.324.01	4201.324.08	\$240.00
30"	12"			4202.312.11	4202.312.01	4202.312.08	\$210.00
	16"			4202.316.11	4202.316.01	4202.316.08	\$230.00
	20"			4202.320.11	4202.320.01	4202.320.08	\$250.00
	24"			4202.324.11	4202.324.01	4202.324.08	\$275.00
36"	12"	4203.312.11	4203.312.01	4203.312.08	\$250.00		
	16"	4203.316.11	4203.316.01	4203.316.08	\$270.00		
	20"	4203.320.11	4203.320.01	4203.320.08	\$295.00		
	24"	4203.324.11	4203.324.01	4203.324.08	\$320.00		

Width	Depth	Thickness	Units/Case	White	Unit Price
18"	12"	1"	1	4200.312.00	\$110.00
	16"			4200.316.00	\$130.00
	20"			4200.320.00	\$150.00
	24"			4200.324.00	\$170.00
24"	12"			4201.312.00	\$145.00
	16"			4201.316.00	\$165.00
	20"			4201.320.00	\$185.00
30"	24"			4201.324.00	\$205.00
	12"			4202.312.00	\$190.00
	16"			4202.316.00	\$195.00
	20"			4202.320.00	\$215.00
36"	24"			4202.324.00	\$235.00
	12"	4203.312.00	\$210.00		
	16"	4203.316.00	\$230.00		
	20"	4203.320.00	\$250.00		
24"	4203.324.00	\$270.00			



TALL CABINET SHELF KITS

Contains 2 fixed, 4 adjustable, cleats and hardware.

Width	Depth	Thickness	Units/Case	Slate	Secret	Coco	Unit Price
18"	16"	1"	1	4204.116.11	4204.116.01	4204.116.08	\$280.00
	20"			4204.120.11	4204.120.01	4204.120.08	\$305.00
	24"			4204.124.11	4204.124.01	4204.124.08	\$350.00
24"	16"			4205.116.11	4205.116.01	4205.116.08	\$325.00
	20"			4205.120.11	4205.120.01	4205.120.08	\$360.00
	24"			4205.124.11	4205.124.01	4205.124.08	\$410.00
30"	16"			4206.116.11	4206.116.01	4206.116.08	\$400.00
	20"			4206.120.11	4206.120.01	4206.120.08	\$425.00
	24"			4206.124.11	4206.124.01	4206.124.08	\$470.00
36"	16"			4207.116.11	4207.116.01	4207.116.08	\$460.00
	20"			4207.120.11	4207.120.01	4207.120.08	\$490.00
	24"			4207.124.11	4207.124.01	4207.124.08	\$530.00
42"	16"	4208.116.11	4208.116.01	4208.116.08	\$520.00		
	20"	4208.120.11	4208.120.01	4208.120.08	\$550.00		
	24"	4208.124.11	4208.124.01	4208.124.08	\$590.00		
48"	16"	4209.116.11	4209.116.01	4209.116.08	\$580.00		
	20"	4209.120.11	4209.120.01	4209.120.08	\$605.00		
	24"	4209.124.11	4209.124.01	4209.124.08	\$640.00		

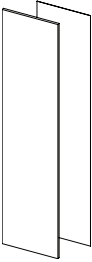
Width	Depth	Thickness	Units/Case	White	Unit Price
18"	16"	1"	1	4204.116.00	\$240.00
	20"			4204.120.00	\$265.00
	24"			4204.124.00	\$300.00
24"	16"			4205.116.00	\$280.00
	20"			4205.120.00	\$310.00
	24"			4205.124.00	\$350.00
30"	16"			4206.116.00	\$340.00
	20"			4206.120.00	\$365.00
	24"			4206.124.00	\$400.00
36"	16"			4207.116.00	\$390.00
	20"			4207.120.00	\$415.00
	24"			4207.124.00	\$450.00
42"	16"	4208.116.00	\$440.00		
	20"	4208.120.00	\$465.00		
	24"	4208.124.00	\$500.00		
48"	16"	4209.116.00	\$490.00		
	20"	4209.120.00	\$515.00		
	24"	4209.124.00	\$550.00		

TOTAL GARAGE

Garage drawer and door fronts are not pre-drilled for handles. Handles sold separately.

DOOR/BACK KITS

Contains 1 door and backing

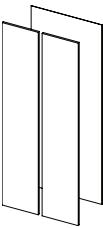


Width	Height	Units/Case	Slate	Secret	Coco	Unit Price
18"	30"	1	4300.445.11	4300.445.01	4300.445.08	\$110.00
	42"		4301.445.11	4301.445.01	4301.445.08	\$140.00
	78"		4302.445.11	4302.445.01	4302.445.08	\$190.00
	90"		4303.445.11	4303.445.01	4303.445.08	\$215.00
24"	30"		4304.445.11	4304.445.01	4304.445.08	\$130.00
	42"		4305.445.11	4305.445.01	4305.445.08	\$170.00
	78"		4306.445.11	4306.445.01	4306.445.08	\$240.00
	90"		4307.445.11	4307.445.01	4307.445.08	\$265.00

Width	Height	Units/Case	White	Unit Price
18"	30"	1	4300.445.00	\$90.00
	42"		4301.445.00	\$115.00
	78"		4302.445.00	\$160.00
	90"		4303.445.00	\$180.00
24"	30"		4304.445.00	\$110.00
	42"		4305.445.00	\$140.00
	78"		4306.445.00	\$200.00
	90"		4307.445.00	\$220.00

DOOR/BACK KITS

Contains 1 door SET and backing

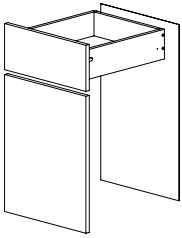


Width	Height	Units/Case	Slate	Secret	Coco	Unit Price
24"	30"	1	4324.445.11	4324.445.01	4324.445.08	\$140.00
	42"		4325.445.11	4325.445.01	4325.445.08	\$180.00
	78"		4326.445.11	4326.445.01	4326.445.08	\$250.00
	90"		4327.445.11	4327.445.01	4327.445.08	\$275.00
30"	30"		4308.445.11	4308.445.01	4308.445.08	\$160.00
	42"		4309.445.11	4309.445.01	4309.445.08	\$200.00
	78"		4310.445.11	4310.445.01	4310.445.08	\$290.00
	90"		4311.445.11	4311.445.01	4311.445.08	\$320.00
36"	30"		4312.445.11	4312.445.01	4312.445.08	\$180.00
	42"		4313.445.11	4313.445.01	4313.445.08	\$230.00
	78"		4314.445.11	4314.445.01	4314.445.08	\$325.00
	90"		4315.445.11	4315.445.01	4315.445.08	\$355.00
42"	78"		4316.445.11	4316.445.01	4316.445.08	\$360.00
	90"		4317.445.11	4317.445.01	4317.445.08	\$400.00
48"	78"		4318.445.11	4318.445.01	4318.445.08	\$390.00
	90"		4319.445.11	4319.445.01	4319.445.08	\$420.00

Width	Height	Units/Case	White	Unit Price
24"	30"	1	4324.445.00	\$120.00
	42"		4325.445.00	\$150.00
	78"		4326.445.00	\$210.00
	90"		4327.445.00	\$230.00
30"	30"		4308.445.00	\$135.00
	42"		4309.445.00	\$170.00
	78"		4310.445.00	\$240.00
	90"		4311.445.00	\$265.00
36"	30"		4312.445.00	\$150.00
	42"		4313.445.00	\$190.00
	78"		4314.445.00	\$270.00
	90"		4315.445.00	\$295.00
42"	78"		4316.445.00	\$300.00
	90"		4317.445.00	\$330.00
48"	78"		4318.445.00	\$330.00
	90"		4319.445.00	\$360.00

TOTAL GARAGE

Garage drawer and door fronts are not pre-drilled for handles. Handles sold separately.



DRAWER AND DOOR KIT

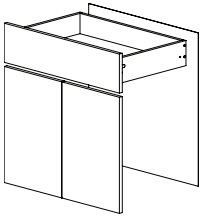
Contains 1- 7-1/2" h drawer, a door below and backing for 30h base cabinets

Width	Units/Case	Slate	Secret	Coco	Unit Price
18"	1	4518.445.11	4518.445.01	4518.445.08	\$215.00

Width	Units/Case	White	Unit Price
18"	1	4518.445.00	\$190.00

DRAWER AND DOOR SET KIT

Contains 1- 7-1/2" h drawer, a door set below and backing for 30h base cabinets

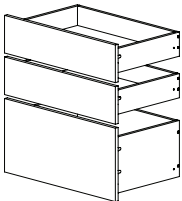


Width	Units/Case	Slate	Secret	Coco	Unit Price
24"	1	4524.445.11	4524.445.01	4524.445.08	\$235.00
30"		4530.445.11	4530.445.01	4530.445.08	\$255.00
36"		4536.445.11	4536.445.01	4536.445.08	\$270.00

Width	Units/Case	White	Unit Price
24"	1	4524.445.00	\$210.00
30"		4530.445.00	\$230.00
36"		4536.445.00	\$245.00

DRAWER KIT

Contains 1- 15" h and 2- 7-1/2" h drawers for 30h base cabinets

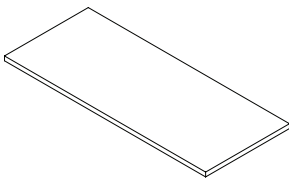


Width	Units/Case	Slate	Secret	Coco	Unit Price
18"	1	4418.445.11	4418.445.01	4418.445.08	\$370.00
24"		4424.445.11	4424.445.01	4424.445.08	\$410.00
30"		4430.445.11	4430.445.01	4430.445.08	\$480.00
36"		4436.445.11	4436.445.01	4436.445.08	\$570.00

Width	Units/Case	White	Unit Price
18"	1	4418.445.00	\$310.00
24"		4424.445.00	\$340.00
30"		4430.445.00	\$400.00
36"		4436.445.00	\$475.00

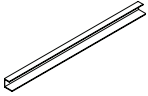
COUNTERTOP

Must specify desired width



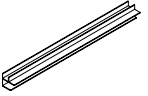
Width	Depth	Thickness	Units/Case	Slate	Secret	Coco	Unit Price
0"-48"	16"	1"	1	4816.000.11	4816.000.01	4816.000.08	\$145.00
	20"			4820.000.11	4820.000.01	4820.000.08	\$160.00
	24"			4824.000.11	4824.000.01	4824.000.08	\$175.00
48"-96"	16"			4916.000.11	4916.000.01	4916.000.08	\$220.00
	20"			4920.000.11	4920.000.01	4920.000.08	\$240.00
	24"			4924.000.11	4924.000.01	4924.000.08	\$260.00

Width	Depth	Thickness	Units/Case	White	Unit Price
0"-48"	16"	1"	1	4816.000.00	\$130.00
	20"			4820.000.00	\$145.00
	24"			4824.000.00	\$160.00
48"-96"	16"			4916.000.00	\$200.00
	20"			4920.000.00	\$215.00
	24"			4924.000.00	\$230.00



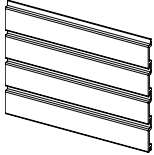
J MOLDING

Length	Units/Case	Gray	Taupe	Unit Price
96"	4	4700.000.11	4700.000.01	\$21.00



CORNER MOLDING

Length	Units/Case	Gray	Taupe	Unit Price
96"	4	4750.000.11	4750.000.01	\$26.00



SLATWALL

Width	Height	Thickness	Units/Case	Gray	Taupe	Unit Price
96"	12"	5/8"	4	4600.000.11	4600.000.01	\$70.00



BASIC ACCESSORY KIT

Contains: 1- 24" Tool Bar, 2- 4" Double Hook, 1- 8" Double Hook, 1- 4" Loop Hook, 1- 6" J Hook, 1- 8" Loop Hook, 1- 8"x12" Basket, 1- 12"x24" Basket, 3- Notch Hook, 3- 1" Hook, 6- 4" Hook

Units/Case	Item	Unit Price
1	4650.000.00	\$260.00



INTERMEDIATE ACCESSORY KIT

Contains: 1- 14"x24" Shelf, 1- 24" Tool Bar, 1- 4" Loop Hook, 2- 8" Loop Hook, 3- 4" Double Hook, 2- 8" Double Hook, 1- 6" J Hook, 1- 8"x12" Basket, 1- 12"x18" Basket, 1- 12"x24" Basket, 1- Shoe Rack, 3- Notch Hook, 3- 1" Hook, 6- 4" Hook, 3- 6" Hook, 3- 8" Hook

Units/Case	Item	Unit Price
1	4651.000.00	\$425.00



DELUXE ACCESSORY KIT

Contains: 1- 14"x48" Shelf, 1- 14"x24" Shelf, 2- 24" Tool Bar, 4- 4" Double Hook, 2- 6" J Hook, 1- 4" Loop Hook, 2- 8" Loop, Hook, 3- 8" Double Hook, 2- 8"x12" Basket, 1- 12"x18" Basket, 1- 12"x24" Basket, 2- Shoe Rack, 3- Notch Hook, 6- 1" Hook, 6- 4" Hook, 6- 6" Hook, 3- 8" Hook

Units/Case	Item	Unit Price
1	4652.000.00	\$725.00



GOLF ACCESSORY KIT

Contains: 1- 14"x24" Shelf, 1- Golf Accessory Holder, 1- 4" Double Hook, 1- 8"x12" Basket, 1- 13"x24" Shoe Rack, 1- 4" Hook

Units/Case	Item	Unit Price
1	4653.000.00	\$225.00



WORKBENCH ACCESSORY KIT

Contains: 1- Tilt Bin Storage, 1- Tilt Bin Storage, 1- Paper Towel Holder, 1- 13" Magnetic Tool, 1- Screwdriver Rack, 1- 8"x12" Basket, 3- 4" Hook

Units/Case	Item	Unit Price
1	4654.000.00	\$185.00

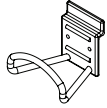


SPORTS ACCESSORY KIT

Contains: 1- 6" J Hook, 1- 4" Double Hook, 1- 8" Double Hook, 1- Tennis Accessory Holder, 1- Plastic Sports Rack, 1- Horizontal Bike Rack, 1- 8"x12" Basket

Units/Case	Item	Unit Price
1	4655.000.00	\$380.00

TOTAL GARAGE



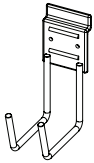
LOOP HOOK

Size	Units/Case	Black/Gray	Unit Price
4"	1	9971.400.00	\$14.00
8"		9971.800.00	\$19.00



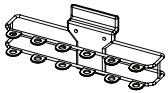
DOUBLE HOOK

Size	Units/Case	Black/Gray	Unit Price
4"	1	9972.400.00	\$12.00
8"		9972.800.00	\$15.00



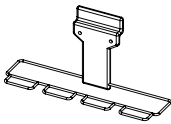
J-HOOK

Size	Units/Case	Black/Gray	Unit Price
6"	1	9973.600.00	\$15.00



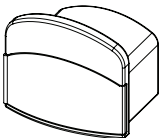
SCREW DRIVER RACK

Units/Case	Black	Unit Price
1	9974.000.00	\$13.00



SMALL TOOL RACK

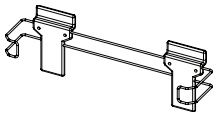
Units/Case	Black	Unit Price
1	9978.000.00	\$13.00



WALL MOUNT HOSE HOLDER

*Requires 2 Accessory Clips for mounting (sold separately)

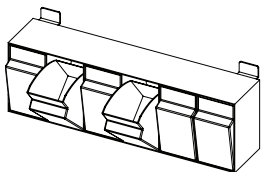
Units/Case	Gray	Unit Price
1	9979.000.00	\$34.00



PAPER TOWEL HOLDER

*Requires 2 Accessory Clips for mounting (sold separately)

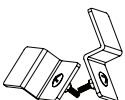
Units/Case	Black	Unit Price
1	9980.000.00	\$14.00



6 TILT BIN STORAGE UNIT

*Requires 2 Accessory Clips for mounting (sold separately)

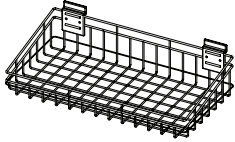
Units/Case	Clear	Unit Price
1	9981.000.00	\$26.00



ACCESSORY CLIPS

Units/Case	Zinc	Unit Price
1	9982.000.00	\$1.50

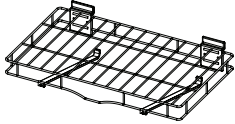
BASKETS



Width	Depth	Units/Case	Charcoal Gray	Unit Price
12"	8"	1	9983.000.00	\$28.00
18"	12"		9984.000.00	\$37.00
24"			9985.000.00	\$42.00

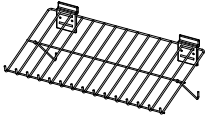
*Depth is front to back of basket

SHELF



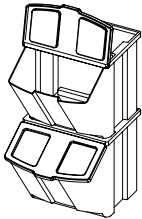
Width	Depth	Units/Case	Gray	Unit Price
24"	14"	1	9986.000.00	\$42.00
48"			9987.000.00	\$73.00

SHOE RACK



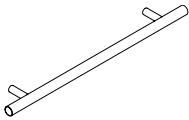
Width	Depth	Units/Case	Gray	Unit Price
24"	13"	1	9988.000.00	\$43.00

RECYCLING CENTER



Units/Case	Gray	Taupe	Unit Price
1	9989.000.11	9989.000.01	\$125.00

BAR HANDLES



Size	Units/Case	Brushed Nickel	Unit Price
96mm	1	9970.709.00	\$7.50
128mm		9970.700.00	\$9.50
156mm		9970.701.00	\$12.00
256mm		9970.702.00	\$17.00
456mm		9970.705.00	\$26.00
758mm		9970.707.00	\$50.00

DRYWALL SCREWS



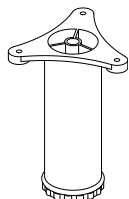
Size	Units/Case	Gray	Taupe	Unit Price
1-5/8"	100	9975.000.11	9975.000.01	\$0.15
2-1/2"		9976.000.11	9976.000.01	\$0.25

TAPCON SCREWS



Size	Units/Case	Gray	Taupe	Unit Price
1-3/4"	100	9977.000.11	9977.000.01	\$0.25

GARAGE FEET



Height	Units/Case	Black/Silver	Unit Price
3-1/2"	4	9969.300.00	\$16.50
6"		9969.600.00	\$19.00
9"		9969.900.00	\$21.00



2010 PRICE BOOK



PHONE 866.347.0341 | FAX 866.311.3041 | orders@orgdirect.com

©2010 Organizers Direct, LLC 04/10